



Shown with optional deck and porch. Solar panel look may vary from those shown.

Rear Elevation

Total Square feet
1,704

Bedrooms
3

Baths
2.5

Solar Village®: Your best choice for energy efficiency, comfort, and livability.

Forward thinking Americans will choose a Solar Village home for many reasons. Whether your top priority is energy savings, healthy indoor air, low maintenance or a smaller carbon footprint, you can be very proud that your new home is both good for you and good for the environment.

Below are the standard features offered in every Solar Village home. Ordinary builders may offer a few of these options, but only Solar Village homes are designed to achieve top performance by engineering all of these systems to work together for maximum savings and comfort.

Standard features include:

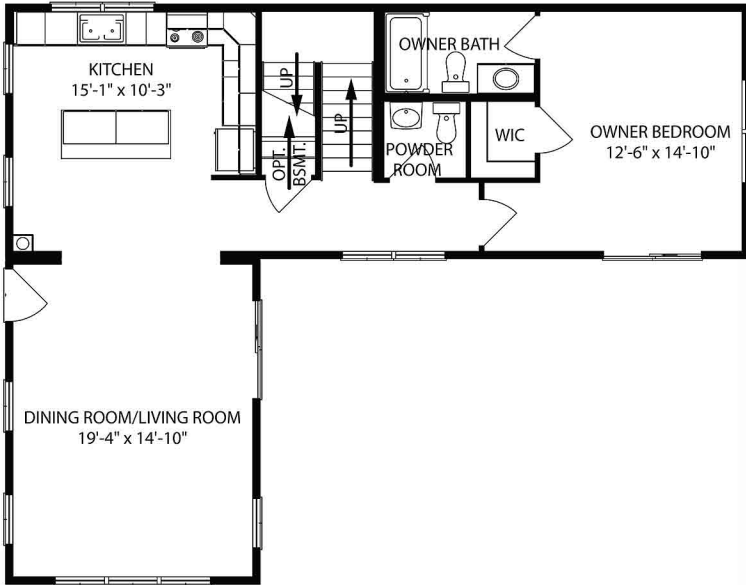
- 2.5 kw solar panels for free solar power
- Ultra-high-efficiency air handler
- Tankless (on-demand) water heater
- Compact fluorescent lights (CFL) to save electricity
- Cement board siding that will last for 50 years
- Exterior 2 x 6 walls with R21 spray foam insulation from Icynene® that prevents air infiltration and 1/2" foam board to reduce both thermal bridging and radiant heat gain.
- R49 roof insulation from a combination of Icynene® foam and batt insulation
- 5/8" drywall for additional thermal mass.
- Harmony No-VOC primer for healthy indoor air.
- Low flow plumbing fixtures for water conservation
- Ceramic tile in most rooms for healthier indoor air



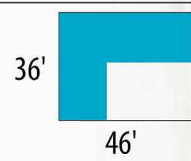


Stratus Floor Plan

1st Floor – 1,041 Square Feet

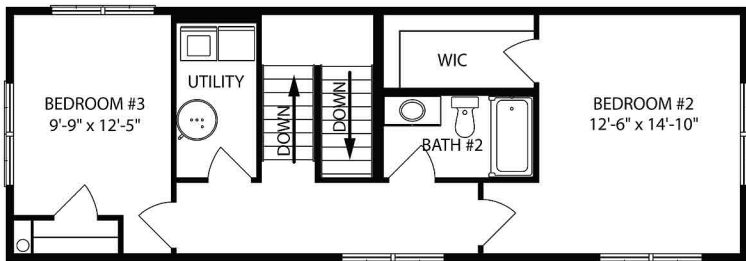


Building Footprint



South Wall

2nd Floor – 663 Square Feet



Optional green upgrades available:

- Bamboo or cork flooring
- Paperstone recycled paper countertops



Note: All Solar Village homes are designed and engineered for maximum energy efficiency and livability. In order to achieve the best performance, changes are not permitted to the building other than approved options supplied by All American Homes. In addition site orientation is critical and the south facing wall must face within + or - 20 degrees of due south.

Solar Village® is a registered trademark of Solar Village Homes, LLC, and is used with permission. All rights reserved.